

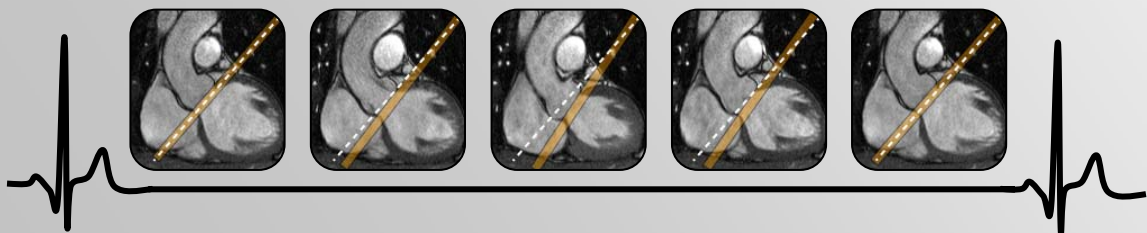
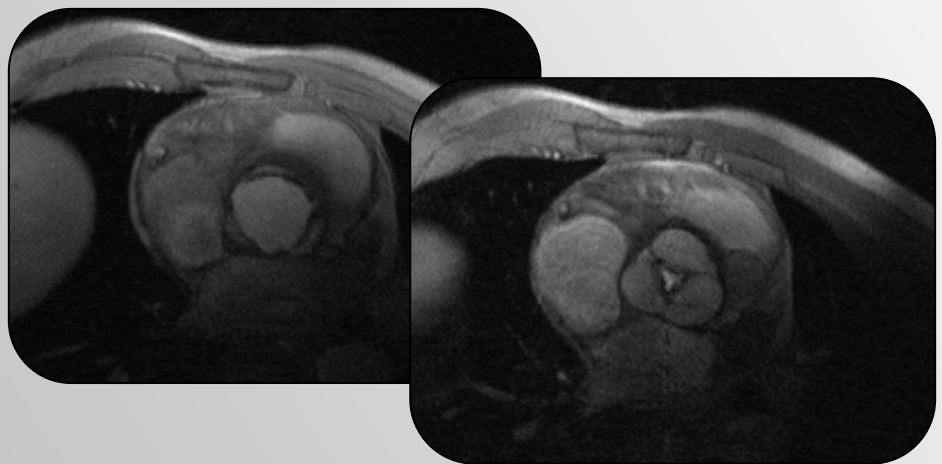
# ValveTrack

---



Designed to automatically track the heart valves through the cardiac cycle, ValveTrack enables user friendly, flexible and accurate moving slice imaging on the Philips Achieva Scanner.

User-defined valves landmarks in a single heart phase are automatically tracked through the entire cardiac cycle. Seamlessly integrated into the scanner Interface, ValveTrack determines individual slice positions and rotations for every heart phase and adapts the acquisition accordingly. ValveTrack is compatible with a wide range of acquisition protocols, from artifact free depiction of valve opening to motion compensated quantitative flow measurements.



# ValveTrack Features

- Automatic tracking of the cardiac valves through the heart cycle
- Single or dual plane planning and tracking
- Automatic calculation of individual scan plane geometry (translation, rotation) for every heart phase
- Interactive manual geometry definition available
- Built-in filters for smooth motion of the scan plane
- 3D visualization of calculated scan plane
- Geometries can be saved and reloaded in subsequent scans
- Cine mode on all views
- Easy and intuitive user interface, minimal user input mode
- Compatible with a wide range of planning and acquisition protocols
- Fully integrated into the scanner system
- Available for Achieva 1.5T and 3T systems, Release 2.6 and later

